

DUST-SCATTERED ULTRAVIOLET HALOS AROUND BRIGHT STARS

JAYANT MURTHY¹ AND RICHARD CONN HENRY²

¹ Indian Institute of Astrophysics, Bengaluru 560 034, India; jmurthy@yahoo.com

² Department of Physics and Astronomy, The Johns Hopkins University, Baltimore, MD 21218, USA
Received 2010 November 26; accepted 2011 March 17; published 2011 May 20

ABSTRACT

We have discovered ultraviolet (UV) halos extending as far as 5° around four (of six) bright UV stars using data from the *Galaxy Evolution Explorer* satellite. These halos are due to scattering of the starlight from nearby thin, foreground dust clouds. We have placed limits of 0.58 ± 0.12 and 0.72 ± 0.06 on the phase function asymmetry factor (g) in the FUV (1521 Å) and NUV (2320 Å) bands, respectively. We suggest that these halos are a common feature around bright stars and may be used to explore the scattering function of interstellar grains at small angles.

Key words: dust, extinction – ISM: clouds – ultraviolet: ISM

Online-only material: machine-readable table

1. INTRODUCTION

A single bright star may illuminate the interstellar dust to a considerable distance and, in point of fact, halos around two bright stars (Spica and Achernar) are clearly visible in the all-sky ultraviolet (UV) maps of Murthy et al. (2010). These halos represent the scattered light from a small amount of interstellar dust located between us and the star, but not physically associated with the star, and their analysis has the potential to unambiguously determine the scattering properties of the grains. Until now, most determinations of the optical constants of the grains have been through observations of either reflection nebulae or the diffuse UV background but the interpretation of both has been fraught with difficulty and often has not yielded unique results (Mathis et al. 2002). Nevertheless, there is a consensus that the grains are moderately reflective and strongly forward-scattering in the UV with an albedo (a) of 0.4–0.6 and a phase function asymmetry factor (g) of about 0.6 (see the review by Draine 2003).

We have used observations from the *Galaxy Evolution Explorer* (GALEX) to search for dust-scattered halos near UV-bright stars. GALEX (described by Martin et al. 2005) has observed close to 80% of the sky in two wavelength bands (FUV: 1350–1700 Å; NUV: 1700–3200 Å) with observations of diffuse radiation at all latitudes outside of the Galactic plane and away from bright stars, for safety reasons. Thus, of the 50 brightest stars in the UV sky, GALEX observed near (within 5°) only 6 of these, including Spica and Achernar, the third and fifth brightest stars in the sky, respectively. Of these six stars, we have found stellar halos around four which we identify as scattering from dust relatively near to and in front of the stars. Unlike classical reflection nebulae where the star is embedded in an optically thick cloud, these halos are due to the single scattering of starlight from a thin layer of dust conveniently between us and the star. The interpretation of the results is therefore much easier and provides, in principle, an unambiguous measurement of the optical constants of the interstellar dust grains, particularly the phase function asymmetry factor (g).

2. OBSERVATIONS AND DATA ANALYSIS

As mentioned above, GALEX observed near only 6 of the 50 brightest UV stars (Table 1). Most of these observations were

part of the All-Sky Imaging Survey with typical exposure times of about 100 s. Although there were a few longer duration observations, these comprised several visits over widely separated dates and, for the sake of consistency, we left them out of this sample. Three of the six stars (Spica, Achernar, and Algenib) were well covered with many nearby observations while the remaining three had only a handful of nearby observations with a concomitant loss in the signal-to-noise ratio.

Our data analysis procedure is a modified version of that used by Sujatha et al. (2010). We first removed all the point sources from the GALEX FUV and NUV images using the merged source catalog provided with each observation, leaving only the diffuse emission. A significant fraction of this emission is due to airglow, primarily resonantly scattered solar photons from O I in Earth's atmosphere, and zodiacal light from sunlight scattered by interplanetary dust grains. We estimated the airglow using empirical relations between the strength of the airglow in each band and the level of the solar radiation found by Sujatha et al. (2010). The zodiacal light contributes only to the NUV band and was estimated by scaling from optical observations tabulated by Leinert et al. (1998), assuming no color correction relative to the solar spectrum. The foreground emission amounted to about $200\text{--}400$ photons $\text{cm}^{-2} \text{s}^{-1} \text{sr}^{-1} \text{Å}^{-1}$ in the FUV channel and $400\text{--}600$ photons $\text{cm}^{-2} \text{s}^{-1} \text{sr}^{-1} \text{Å}^{-1}$ in the NUV which we subtracted from each observation, with an uncertainty of about 50 photons $\text{cm}^{-2} \text{s}^{-1} \text{sr}^{-1} \text{Å}^{-1}$ in the level of the subtracted light.

We averaged the remaining emission into annular rings of width 0.05° around the star along with the average flux in the *Infrared Astronomical Satellite* (IRAS) 60 and $100 \mu\text{m}$ bands (Figure 1). UV enhancements are seen around four of the six stars observed with most of them also showing an enhancement in the $60 \mu\text{m}/100 \mu\text{m}$ ratio. The emission far from the star, in both the UV and the IR, is due to the general diffuse radiation field (Murthy et al. 2010) but, as these are bright early-type stars, the stellar sphere of influence extends far into the surrounding interstellar medium. The ratio between the diffuse UV flux and that of the star ranges from about 6×10^{-8} in the case of Achernar to 6×10^{-7} for Mirzam (Figure 2). We did not observe an enhancement near Adhara, perhaps because there were no observations nearer than 3° from the star, nor was there an enhancement around Sirius, despite having data as close as 2° to the star. As a consequence, we have proceeded with the

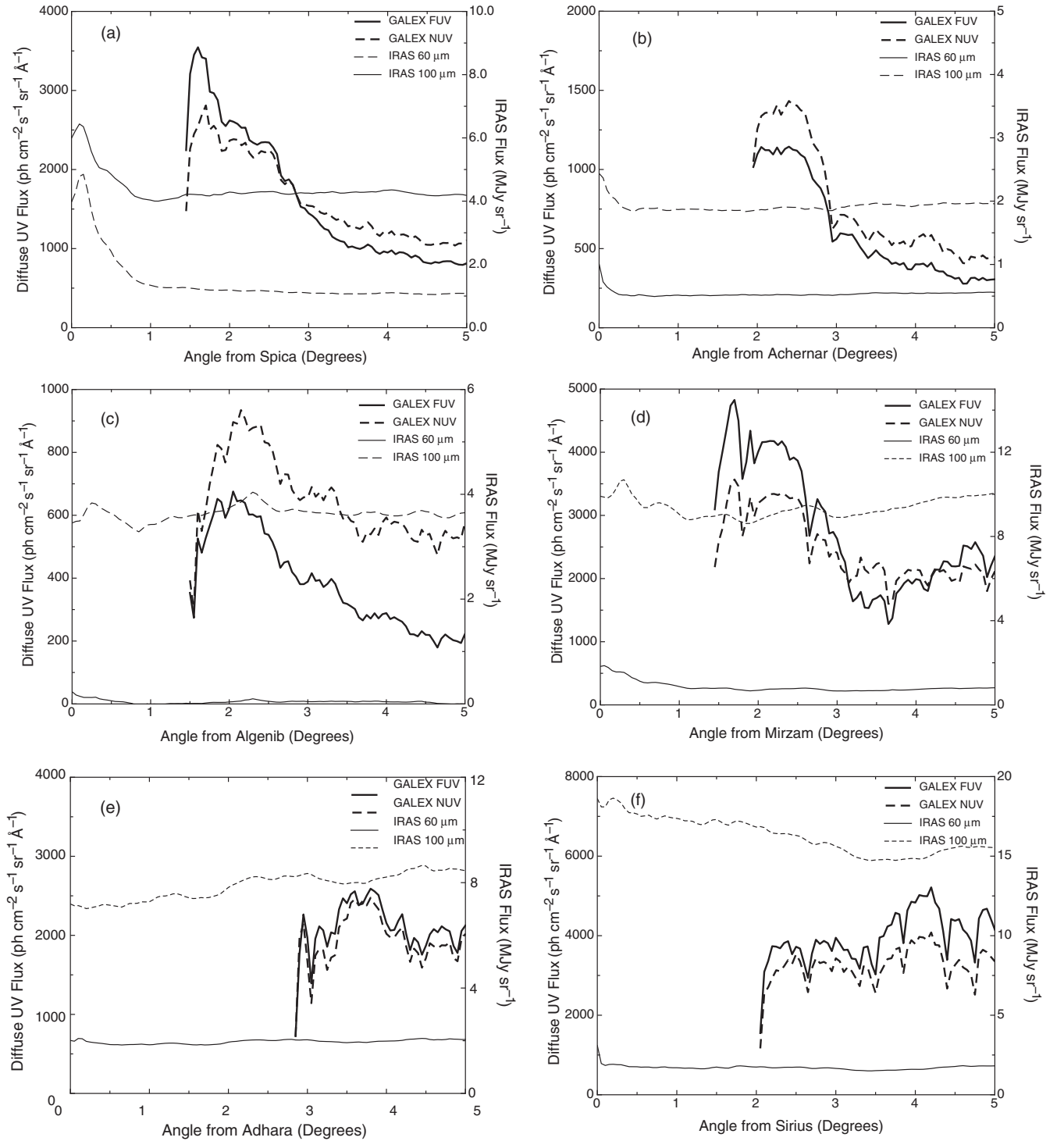


Figure 1. Angular dependence of UV emission for Spica (a), Achernar (b), Algenib (c), Mirzam (d), Adhara (e), and Sirius (f). The downturn in the profiles at small angles is an artifact of the averaging process. The IR emission is superimposed on each figure.

assumption that instrumental scattering is unimportant at these angular distances even from bright sources.

3. MODELING

The geometry in our observed fields is particularly simple. A bright star dominates the nearby radiation field and its light is forward-scattered by a thin layer of dust between us and the star. We have used Kurucz (1979) model spectra convolved

with the instrumental calibration to calculate the count rate in the *GALEX* FUV and NUV bands (Table 1) for each star. This light was scattered from a plane-parallel sheet of dust in front of the star where the amount of dust in each pixel was given by the extinction maps of Schlegel et al. (1998). The scattering was assumed to be single scattering, as the dust is optically thin, and was governed by the Henyey–Greenstein scattering function (Henyey & Greenstein 1941), an analytical approximation to Mie scattering from spherical dust grains with two parameters:

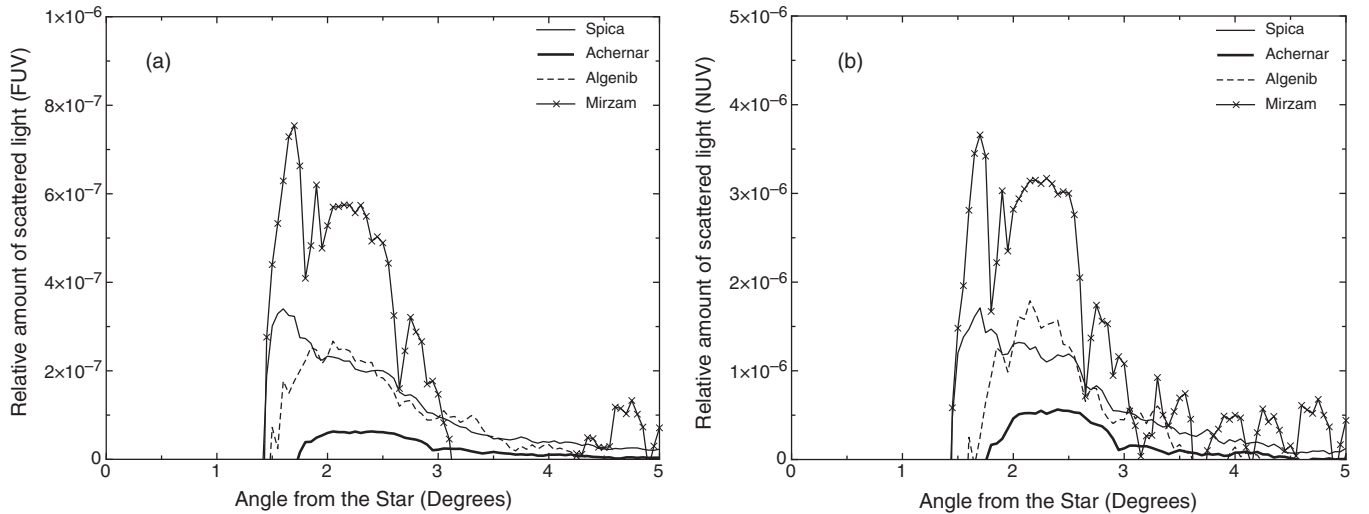


Figure 2. Ratio between diffuse flux and stellar flux for the four stars with halos for FUV (a) and NUV (b). A background has been subtracted from the diffuse flux such that the level is zero at large angles. The drop in the profiles near the star is an artifact of the averaging process.

Table 1
Observation Log

Star	Sp. Type	l	b	d^a	$N(\text{H I})^b$	FUV ^c	NUV ^c	Number ^d
Spica (α Vir)	B1 III	316.11	50.85	80	19.0	4204	2367	90
Achernar (α Eri)	B3 Vpe	290.84	-58.79	44	18.8	6912	3892	56
Algenib (γ Peg)	B2IV	109.43	-46.68	103	20.0	808	455	86
Sirius (α CMa)	A1V	227.23	-8.89	2.6	18.0	1549	1630	4
Mirzam (β CMa)	B1III-III	226.06	-14.27	150	18.4	1768	995	4
Adhara (ε CMa)	B2 Iab	239.83	-11.33	132	18.0	2751	1549	7

Notes.

^a Distance in pc to star.

^b Column density to star (Shull & van Steenberg 1985)

^c Predicted count rate in *GALEX* bands in counts s^{-1} .

^d Number of observations within 5° of the star.

the albedo (a) and the phase function asymmetry factor ($g = \langle \cos\theta \rangle$).

The level of the scattered radiation is directly proportional to a and to the optical depth in the optically thin limit but, as noted by Lee et al. (2008), there is a more complex tradeoff between the distance of the cloud from the star and g . This is illustrated in Figure 3 where we have calculated the expected emission for a plane-parallel dust sheet in front of Spica, assuming an albedo of 0.1. The closer the dust is to the star, the stronger the halo will be, even with isotropic scattering ($g = 0$). On the other hand, if the dust is far from the star, halos will only be seen if the grains are strongly forward scattering. The slope flattens out at greater angular separations from the star in all cases and, as a result, there is some ambiguity in modeling the data at the angles where we have observations ($>2^\circ$). Observations closer to the star would help to remove this degeneracy but are difficult because of the increasing brightness of the field close to the star.

Fortunately, we have an additional constraint on the location of the dust responsible for most of the observed UV radiation through the observed *IRAS* 60 μm /100 μm ratio. Dust near the star will be heated by the stellar radiation field and the ratio will increase if the cloud is closer to the star. Draine & Li (2007) have tabulated the expected emission in the two *IRAS* bands as a function of the radiation field for a mixture of silicate and carbonaceous grains and we have used this to estimate the distance between the star and the dust (Table 2). We generated model fluxes for each pixel for a range of parameter values

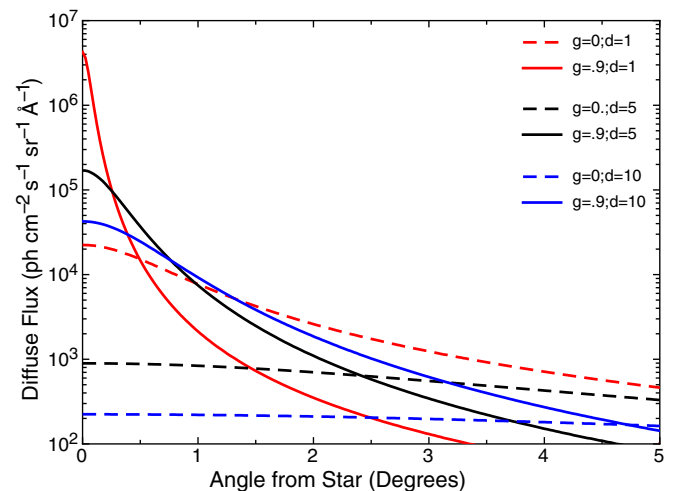


Figure 3. Dependence of scattering on g and distance from the star (Spica in this example). Halos are more prominent when the scattering layer is near the star and the grains are forward scattering. Observations closer to the star provide a better discriminator of the optical constants.

and compared with the observational data using standard χ^2 techniques (Lampton et al. 1976).

Rather than comparing the model values with the annual averages of Figure 1, we averaged the *GALEX* data into 0.25 deg^2 bins, which gave us a finer granulation in the sky.

Table 2
Distance of the Scattering Layer from the Star

Star	60 $\mu\text{m}/100 \mu\text{m}$ Ratio	Distance of Dust (pc)
Spica	0.75	3
Achernar	0.4	3
Mirzam	0.15	>10
Adhara	0.3	8
Algenib	–	–

Table 3
GALEX FUV and NUV around Stars

Name ^a	GLON ^b	GLAT ^c	Angle ^d	FUV ^e	NUV ^f	$E(B-V)$ ^g
Spica	313.71	51.32	1.58	3809.73	2607.71	0.042
Spica	317.74	52.08	1.60	4073.17	3005.78	0.044
Spica	313.70	51.57	1.68	4311.21	3185.18	0.037
Spica	318.15	52.08	1.77	4079.03	3618.86	0.046
Spica	317.75	52.33	1.80	4349.50	3893.84	0.050
Spica	313.69	51.82	1.80	3983.68	3569.00	0.038
Spica	315.29	52.59	1.82	2495.77	2348.72	0.029
Spica	313.31	51.31	1.82	4226.48	3409.33	0.039
Spica	313.30	51.56	1.90	4140.50	3589.98	0.035
Spica	313.39	50.06	1.90	3074.67	2271.59	0.048

Notes.^a The name of the illuminating star.^b Galactic longitude of the pixel.^c Galactic latitude of the pixel.^d Angle in degrees from the illuminating star.^e Flux in the GALEX FUV band in units of photons $\text{cm}^{-2} \text{s}^{-1} \text{sr}^{-1} \text{\AA}^{-1}$.^f Flux in the GALEX NUV band in units of photons $\text{cm}^{-2} \text{s}^{-1} \text{sr}^{-1} \text{\AA}^{-1}$.^g $E(B-V)$ from Schlegel et al. (1998).

(This table is available in its entirety in a machine-readable form in the online journal. A portion is shown here for guidance regarding its form and content.)

These data (Table 3) are plotted against representative model values in Figure 4. We have found an empirical scatter in our data of about 300 photons $\text{cm}^{-2} \text{s}^{-1} \text{sr}^{-1} \text{\AA}^{-1}$, much larger than the intrinsic photon noise of a few photons $\text{cm}^{-2} \text{s}^{-1} \text{sr}^{-1} \text{\AA}^{-1}$. About 50 photons $\text{cm}^{-2} \text{s}^{-1} \text{sr}^{-1} \text{\AA}^{-1}$ of this is due to the subtraction of the foreground airglow and zodiacal light (Sujatha et al. 2010) but more important is the modeling uncertainty due to the difficulty in estimating the amount of dust in the scattering layer, particularly at the low column densities applicable in this work. In addition, the local interstellar medium is complex (Redfield & Linsky 2008) and it may well be that the dust is split between two or more clouds with the bulk of the UV and IR emission coming from the cloud nearest the star. We will discuss the effects of this assumption further in the following section.

4. RESULTS

Interestingly, dust-scattered halos were seen around four of the six stars studied here. Of the other two stars, Sirius is too close to the Sun to have any foreground dust while our models indicate that any enhancement around Adhara would only extend out about 3° from the star, where there were no observations. Similar halos were observed by Lee et al. (2008) around stars in front of the Ophiuchus molecular cloud using the SPEAR UV spectrograph and it is quite likely that such enhancements exist around the majority of bright stars, although they may not always be observable. The brightness of the halo will be governed by a number of parameters including the optical constants of the grains, the distance between the star and the dust, the intrinsic luminosity of the star, and the

Table 4
Optical Constants

λ (\AA)	a	Δa	g	Δg	Region	Reference
FUV						
1500	0.42	–	0.44	–	DGL	Wright (1992)
1500	0.5	–	0.9	–	DGL	Witt & Petersohn (1994)
1500	0.44	0.22	–	–	DGL	Murthy & Henry (1995)
1520	0.36	0.2	0.52	0.22	DGL	Lee et al. (2008)
1521	0.4	0.01	0.7	0.01	DGL	Sujatha et al. (2009)
1521	0.32	0.09	0.51	0.19	DGL	Sujatha et al. (2010)
1521	0.12	0.04	0.57	0.1	Spica	This work
1521	0.11	0.03	0.75	0.05	Achernar	This work
1521	0.1	0.04	0.4	0.18	Mirzam	This work
1521	0.18	0.16	0.45	0.4	Algenib	This work
1525	0.77	0.05	0.66	0.05	IC 435	Calzetti et al. (1995)
1550	0.6	0.05	0.7	0.1	DGL	Lillie & Witt (1976)
1550	0.5	–	0.5	–	DGL	Morgan et al. (1976)
NUV						
2275	0.39	0.05	0.7	0.05	IC 435	Calzetti et al. (1995)
2320	0.4	–	0.7	–	DGL	Sujatha et al. (2009)
2320	0.45	0.08	0.56	0.1	DGL	Sujatha et al. (2010)
2320	0.26	0.09	0.73	0.04	Spica	This work
2320	0.14	0.03	0.63	0.06	Achernar	This work
2320	0.11	0.04	0.4	0.2	Mirzam	This work
2320	0.32	0.3	0.45	0.4	Algenib	This work
2325	0.38	0.05	0.78	0.05	IC 435	Calzetti et al. (1995)
2350	0.58	0.15	–1	0	DGL	Morgan et al. (1976)

total amount of dust in the scattering layer, while the angular dependence is determined by the distance of the dust to the star and the scattering function. As discussed above, we have used the 60 $\mu\text{m}/100 \mu\text{m}$ ratio to infer a distance of the dust from each star, which we find to range from 3 to 10 pc resulting in scattering angles (between the starlight and the scattered radiation) between 20° and 50° .

We have plotted the allowed ranges for the optical constants for each of the four stars with halos in Figure 5 with representative model fits in Figure 4. The brightest of our halos is around Spica from a dust cloud noted by Zagury et al. (1998) which we place at a distance of 3 pc from the star using the 60 $\mu\text{m}/100 \mu\text{m}$ ratio (Table 2). We find formal 1σ bounds of 0.58 ± 0.12 on the phase function asymmetry factor (g) in the FUV (Figure 5(a)) and 0.72 ± 0.06 in the NUV (Figure 5(b)), in agreement with most determinations in the literature (Table 4). The corresponding limits on the albedo are 0.10 ± 0.05 in the FUV and 0.26 ± 0.10 in the NUV.

These low albedos are a direct consequence of our assumption that the dust is concentrated in a single plane-parallel sheet. Rather, it is likely that the dust is distributed along the line of sight in multiple components. It may not be possible to find a unique solution with the available information but we have explored one possibility: that of two plane-parallel clouds at different distances from the star. One such example is shown in Figure 6 where we have divided the dust between two clouds such that 20% of the total matter is in a cloud at 2 pc from Spica with the remainder in a cloud at a distance of 30 pc from the star. The albedo of the dust in both clouds is fixed at 0.4 with g at 0.6. Most of the angular dependence for moderate values of g is contained in the cloud nearer to the star with the more distant cloud providing a flat offset. We have found that the shape of the curve is difficult to fit with g values differing by much from 0.6 but is hampered by not having observations nearer to the star.

The diffuse emission is too intense to observe much closer to any of these stars with GALEX; however, the emission

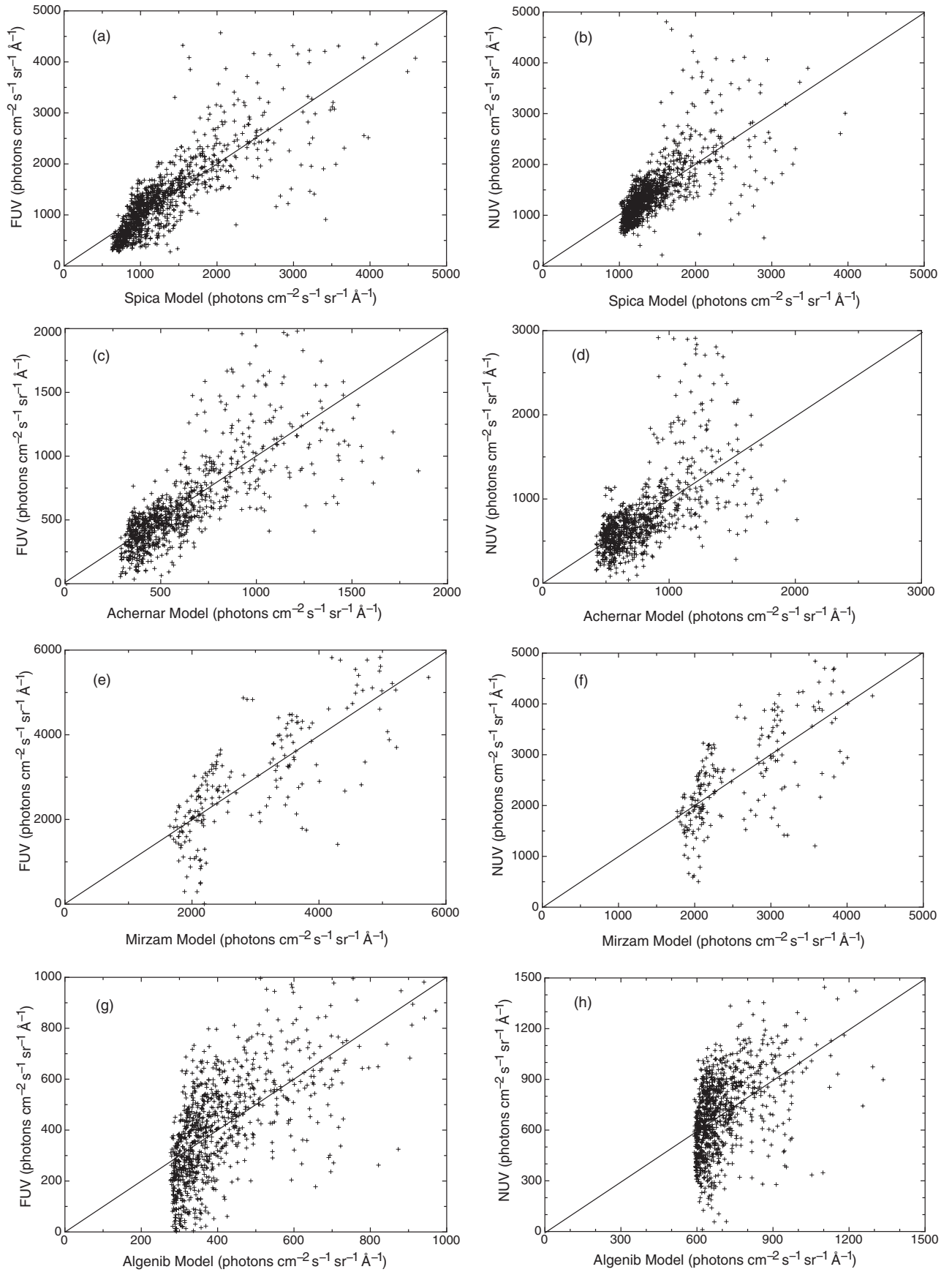


Figure 4. Model fits for Spica FUV ((a): minimum $\chi^2 = 1.34$) and NUV ((b): minimum $\chi^2 = 1.16$); Achernar FUV ((c): minimum $\chi^2 = 0.915$) and NUV ((d): minimum $\chi^2 = 1.77$); Mirzam FUV ((e): minimum $\chi^2 = 11.79$) and NUV ((f): minimum $\chi^2 = 8.43$); and Algenib FUV ((g): minimum $\chi^2 = 0.348$) and NUV ((h): minimum $\chi^2 = 0.656$). Airglow and zodiacal light have been subtracted from the data values and we have assumed a scatter of $300 \text{ photons cm}^{-2} \text{ s}^{-1} \text{ sr}^{-1} \text{\AA}^{-1}$ to account for both experimental and modeling uncertainties. An $x = y$ line has been added to each plot for reference.

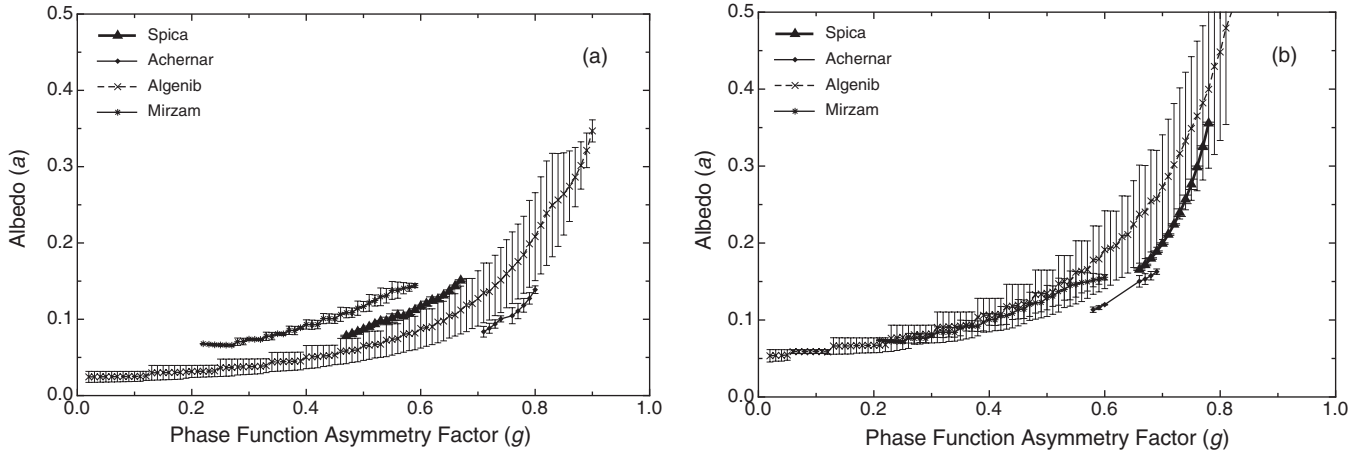


Figure 5. Allowed phase space for a and g for the FUV (a) and NUV (b).

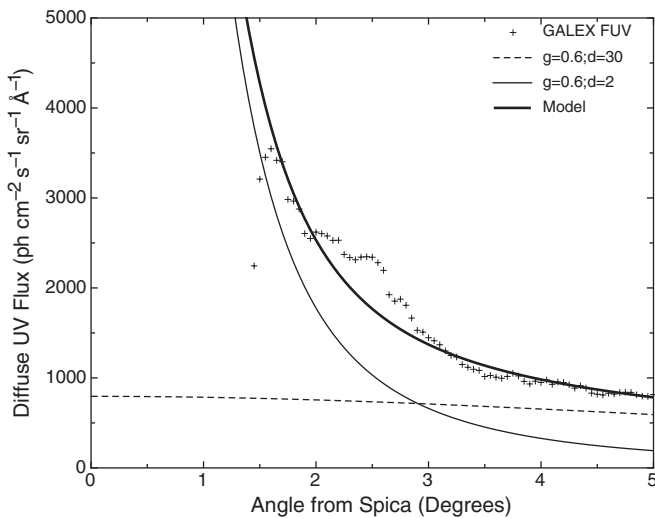


Figure 6. Model fit with two plane-parallel clouds at distances of 2 and 30 pc, respectively, from Spica with 20% of the total column density in the first cloud and 80% in the second. The optical constants are fixed with $a = 0.5$ and $g = 0.6$. The *SPEAR* data points represent integrations from 0° to 1° and 1° to 2° where the flux changes rapidly.

around Spica is also visible as a bright spot in the *SPEAR*/FIMS maps (Edelstein et al. 2006). Although Park et al. (2010) focused on the $H\alpha$ emission around Spica, a strong continuum emission is apparent in their spectrum with levels of $31,000 \text{ photons cm}^{-2} \text{ s}^{-1} \text{sr}^{-1} \text{\AA}^{-1}$ and $13,000 \text{ photons cm}^{-2} \text{ s}^{-1} \text{sr}^{-1} \text{\AA}^{-1}$ at angular distances of 0° – 1° and 1° – 2° , respectively (J.-W. Park 2010, private communication). These are plotted in Figure 7 along with our *GALEX* data and three models for different values of g . It is difficult to fit the *SPEAR* data in conjunction with the *GALEX* data, perhaps because the *SPEAR* data are averaged over large angular ranges with a wide variation in flux but, certainly, very large values of g ($g > 0.7$) are ruled out.

5. CONCLUSIONS

We have observed dust halos around four out of six stars, extending as far as 5° from the star. Of the remaining two stars, Sirius is close enough to the Sun (8 pc) that there is not enough foreground dust to scatter the light while we believe that observations nearer to Adhara would have detected a halo. Halos were also observed around many stars in Ophiuchus by

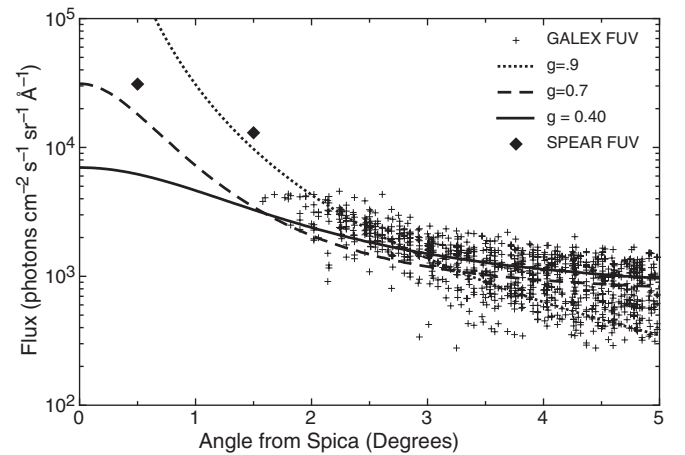


Figure 7. FUV flux with angle (+) for Spica. Three different profiles are plotted for different values of g for a dust cloud 3 pc from the star. The two *SPEAR* points (J.-W. Park 2010, private communication) are plotted as diamonds.

Lee et al. (2008) and we suggest that such halos, where starlight from bright stars is scattered by foreground dust, are a common occurrence, although their detection may prove to be challenging closer to the star because of instrumental scattering.

We have placed 1σ limits on the phase function asymmetry factor (g) of 0.58 ± 0.12 in the FUV and 0.72 ± 0.06 in the NUV but were unable to constrain the albedo because of an uncertain dust distribution. These observations have shown the potential for understanding the scattering function of the dust grains but are frustratingly limited by not observing close enough to the stars. There is a limited window of opportunity to obtain new *GALEX* observations but we will also explore other opportunities with other instruments. We are also attempting better models combining infrared data available from *IRAS* and other instruments to further constrain the dust properties.

We thank an anonymous referee for inducing us to clarify the geometrical uncertainty in the model. Greg Schwarz helped us greatly in publishing our data. The research leading to these results received funding from the Indian Space Research Organization through the Space Science Office and the National Aeronautics and Space Administration through the Maryland Space Grant program. This research is based on observations made with NASA's *GALEX* program, obtained from the data archive at the Space Telescope Science Institute (STScI). STScI

is operated by the Association of Universities for Research in Astronomy, Inc. under NASA contract NAS 5-26555.

REFERENCES

- Calzetti, D., Bohlin, R. C., Gordon, K. D., Witt, A. N., & Bianchi, L. 1995, *ApJ*, **446**, 97
- Draine, B. T. 2003, *ARA&A*, **41**, 241
- Draine, B. T., & Li, A. 2007, *ApJ*, **657**, 810
- Edelstein, J., et al. 2006, *ApJ*, **644**, L153
- Heney, L. C., & Greenstein, J. L. 1941, *ApJ*, **93**, 70
- Kurucz, R. L. 1979, *ApJ*, **40**, 1
- Lampton, M., Margon, B., & Bowyer, S. 1976, *ApJ*, **208**, 177
- Lee, D.-H., et al. 2008, *ApJ*, **686**, 1155
- Leinert, C., et al. 1998, *A&AS*, **127**, 1
- Lillie, C. F., & Witt, A. N. 1976, *ApJ*, **208**, 64
- Martin, D. C., et al. 2005, *ApJ*, **619**, L1
- Mathis, J. S., Whitney, B. A., & Wood, K. 2002, *ApJ*, **574**, 812
- Morgan, D. H., Nandy, K., & Thompson, G. I. 1976, *MNRAS*, **177**, 531
- Murthy, J., & Henry, R. C. 1995, *ApJ*, **448**, 848
- Murthy, J., Henry, R. C., & Sujatha, N. V. 2010, *ApJ*, **724**, 1389
- Park, J.-W., Min, K.-W., Seon, K.-I., Han, W., & Edelstein, J. 2010, *ApJ*, **719**, 1964
- Redfield, S., & Linsky, J. L. 2008, *ApJ*, **673**, 283
- Schlegel, D. J., Finkbeiner, D. P., & Davis, M. 1998, *ApJ*, **500**, 525
- Shull, J. M., & van Steenberg, M. E. 1985, *ApJ*, **294**, 599
- Sujatha, N. V., Murthy, J., Karnataki, A., Henry, R. C., & Bianchi, L. 2009, *ApJ*, **692**, 1333
- Sujatha, N. V., Murthy, J., Suresh, R., Henry, R. C., & Bianchi, L. 2010, *ApJ*, **723**, 1549
- Witt, A. N., & Petersohn, J. K. 1994, in ASP Conf. Ser. 58, The First Symposium on the Infrared Cirrus and Diffuse Interstellar Clouds, ed. R. M. Cutri & W. B. Latter (San Francisco, CA: ASP), 91
- Wright, E. L. 1992, *ApJ*, **391**, 34
- Zagury, F., Jones, A., & Boulanger, F. 1998, in IAU Colloq. 166, The Local Bubble and Beyond, Vol. 506, ed. D. Breitschwerdt, M. J. Freyberg, & J. Truemper (Lecture Notes in Physics; Berlin: Springer), 385